

A decorative graphic on the left side of the slide. It consists of a blue parallelogram and a light green parallelogram, both tilted at an angle. The blue shape is in the foreground, and the green shape is partially behind it. They are set against a dark blue background with faint, lighter blue diagonal stripes.

# Lec 4 - Architecture



# Decisions decisions

- Rest or graphQL? Django or Express?  
React or Angular?
- Monolith or microservices?
- Cloud provider or managed services?

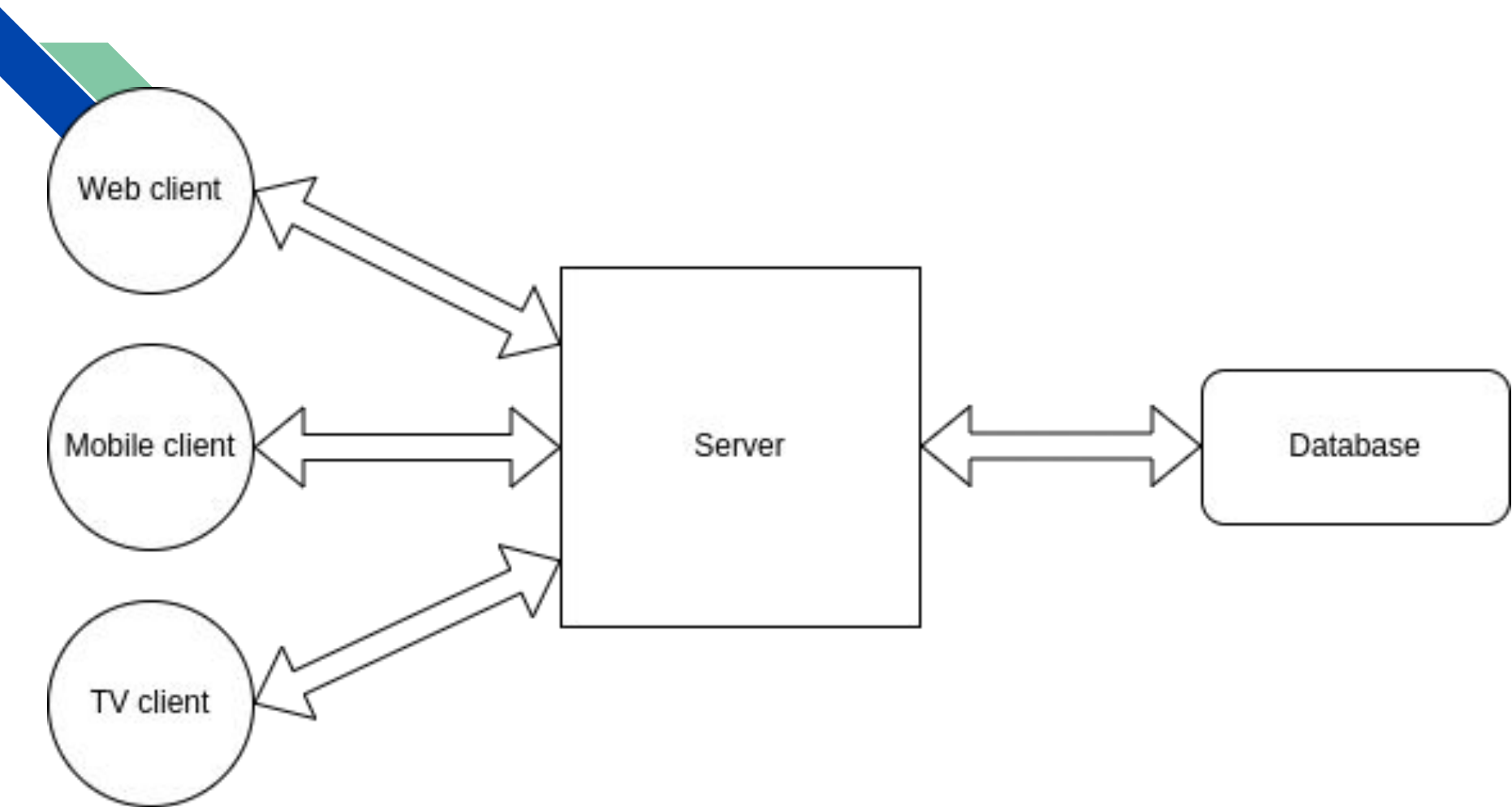


# Client-server/API?

- Application Programming Interface
- Think of it like a contract
- Can be FE to BE, or BE to other services



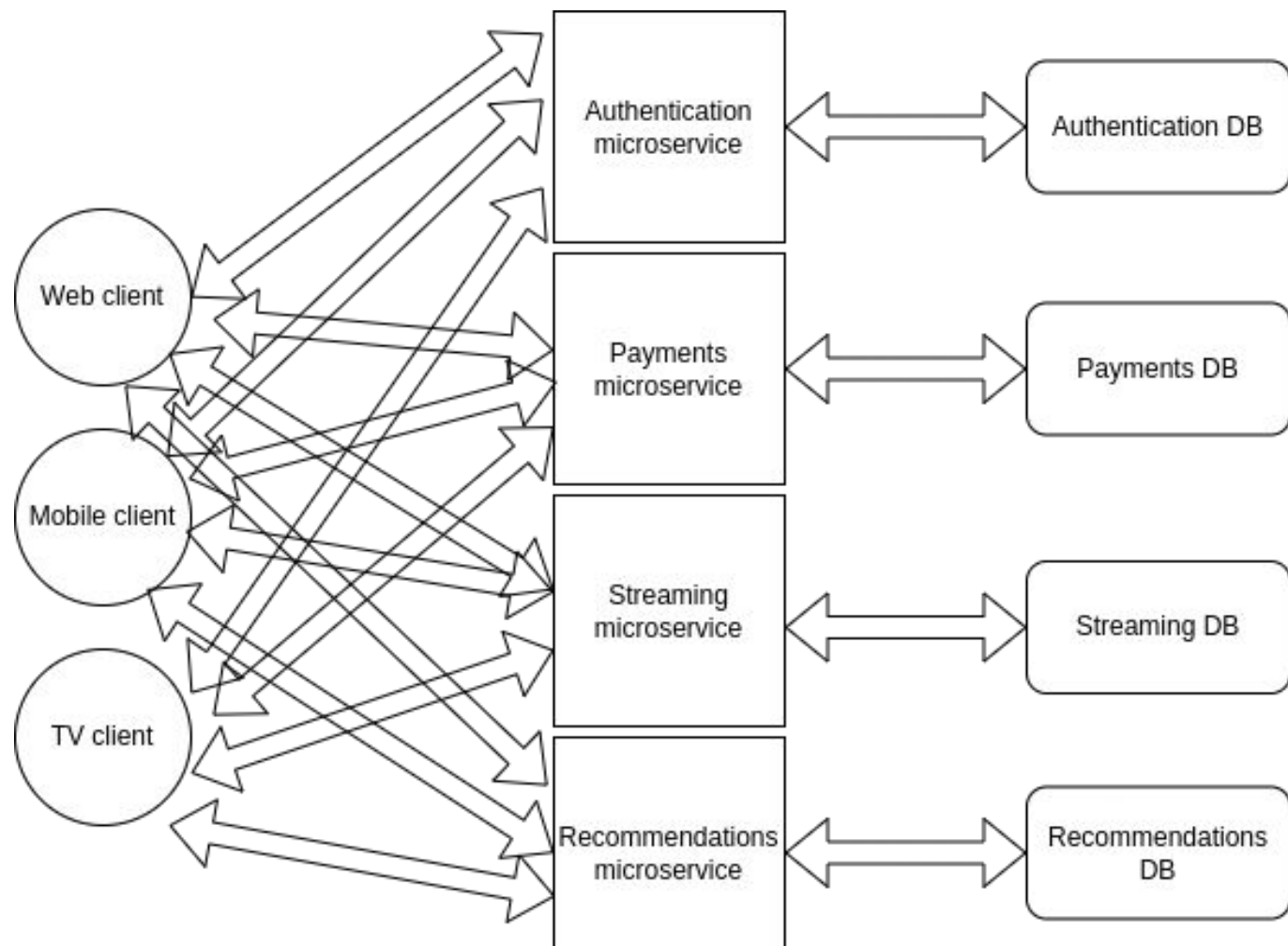
# Live Example

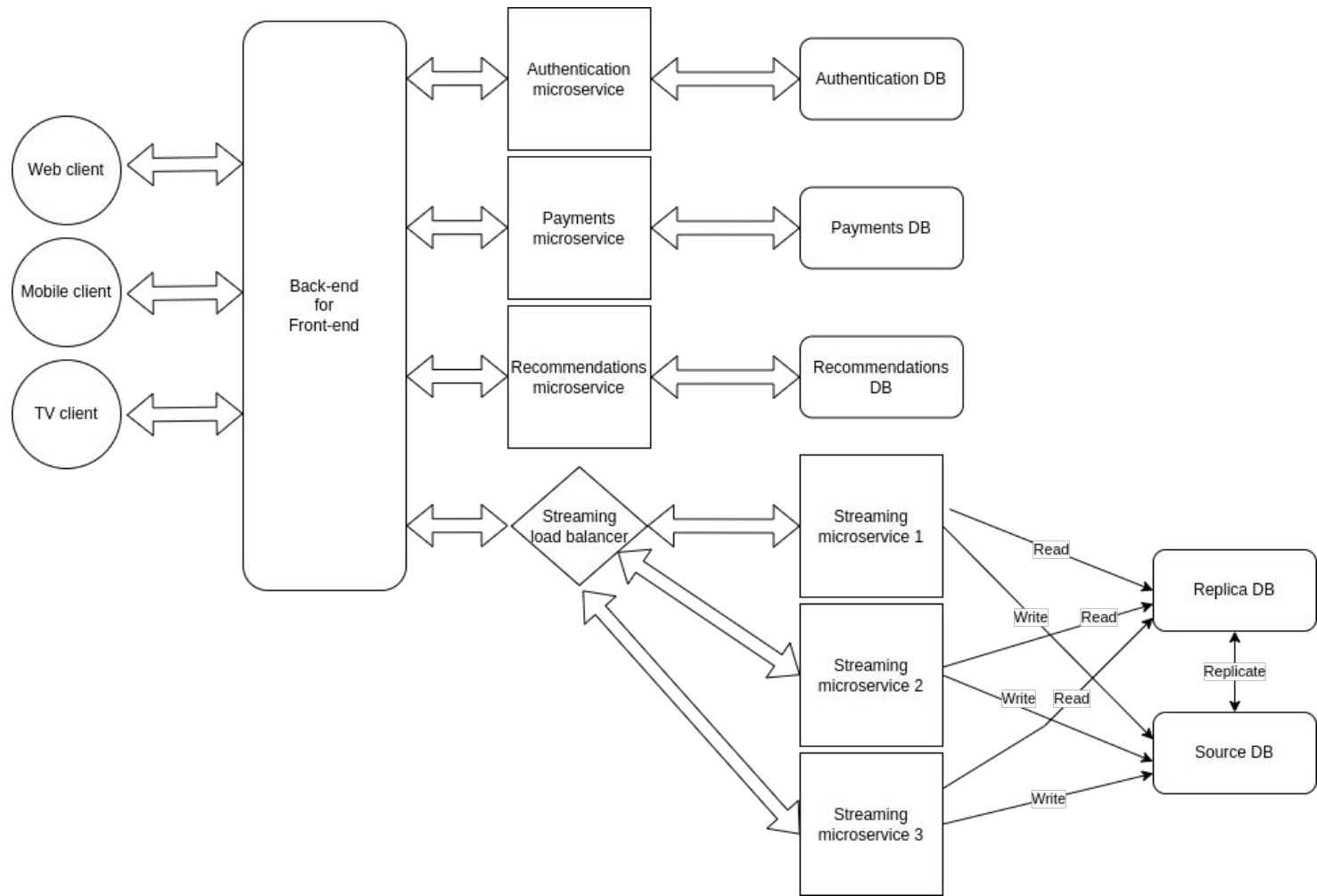




# Microservices

- As you scale (both app and team), you might run into bottlenecks
- Microservices is one of the main ways of dealing with it









# MVC

- Model - View - Controller
- View -> Model
- View -> Controller -> Model
- Abstraction for better organization



# MVVM

- Model - View - View Model
- How to keep data in sync with GUI,  
key: data binding



# Declarative?

```
nav a:hover {  
    background-color: red;  
}
```

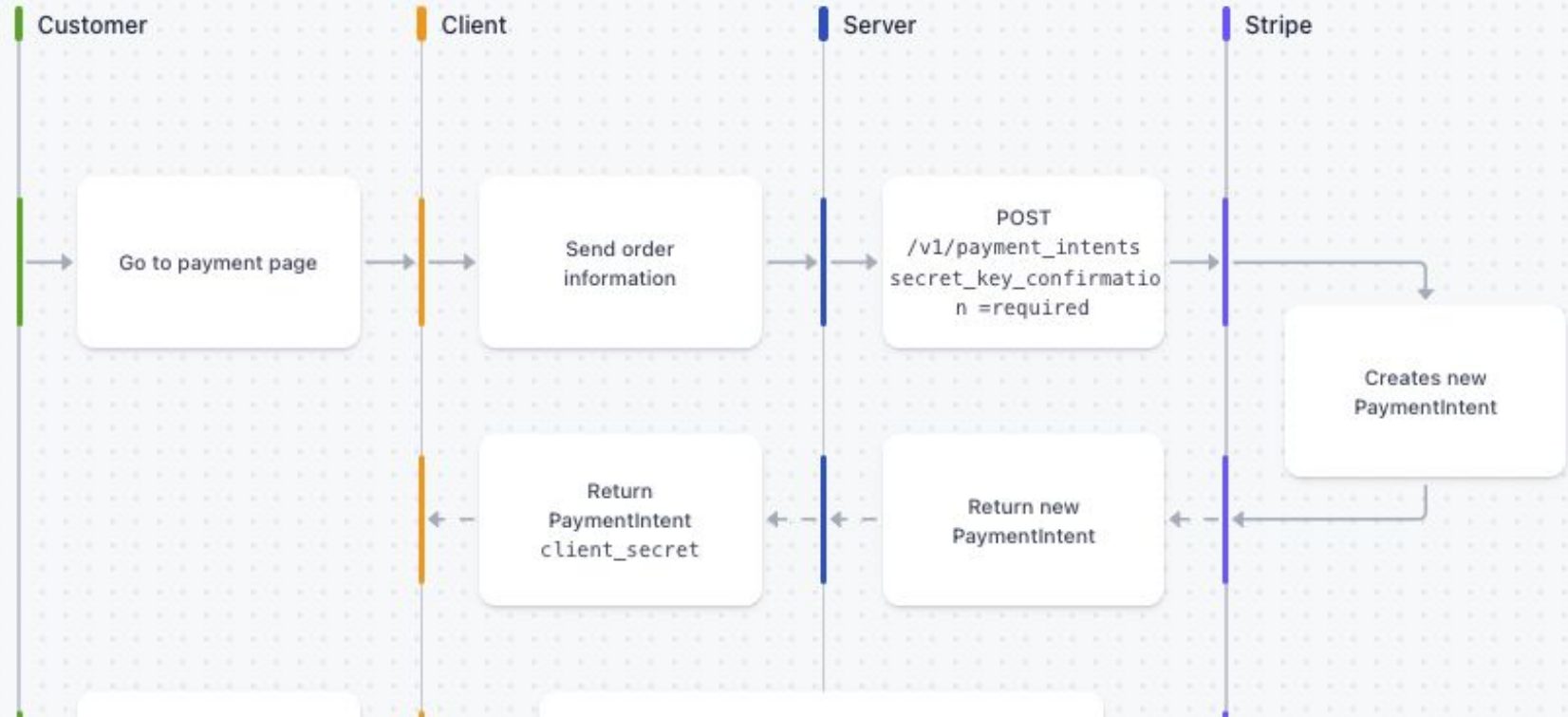
```
el.onmouseover = function () {  
    this.style.backgroundColor = 'red'  
}  
el.onmouseout = function () {  
    this.style.backgroundColor = '';  
}
```



# CRC diagram

- Refresher from CSC207
- Class - Responsibility - Collaborators
- What the class does and how does each relate to others

# Sequence Diagram



# Database Diagram

